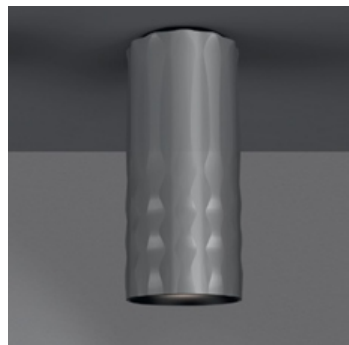


PRODUCT DATA SHEET

Fiamma Ceiling 30 - Grey



DESIGN BY:

Wilmotte & Industries
2015

MATERIALS:

Aluminium

DESCRIPTION:

"Modular and adjustable, Fiamma works with a LED source base and a set of accessories to meet the different needs of lighting in hotels: bedside lamp, floor lamp, wall lamp, suspension light. The look is willing to be « domestic », to feel like being at home, in order to reinforce the cosines of the object." Fiamma is a systemic lighting element designed to respond to the needs of the contract sector, yet well suited also for everyday living environments. An anodized aluminium cylinder with a specific texture – a perfect combination of look and functionality – is the true luminous engine of the system. The light emitted by the LED source is cleverly controlled by a transparent diffuser, designed with an anti-reflex texture, to ensure visual comfort in all usage conditions. Different supports can be assembled on it, all made of carefully processed aluminium, to obtain a variety of versions – suspension, ceiling, reading, table.

SELECT

LED

Grey

PRODUCT CODE

1989010A

Light emission

IP20

Dimmable

TECHNICAL DATA SHEET

FEATURES

Product name:	Fiamma Ceiling 30 - Grey
Article Code:	1989010A
Colour:	Grey
Material:	Aluminium
Series:	Design

DIMENSIONS

Height:	cm 31
Diameter:	cm 13

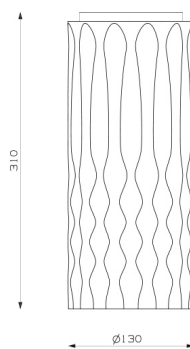
LAMPS INCLUDED

Category:	LED COB
Number:	1
Watt:	28W
Luminous Flux (lm):	3200lm
Color temperature (K):	3000K
Class:	A

LUMINAIR

Watt:	28W
Luminous Flux (lm):	1878lm
CCT:	3000K
CRI:	90
Dimmer	
Dimmable	

DIMENSIONS



COLOUR

